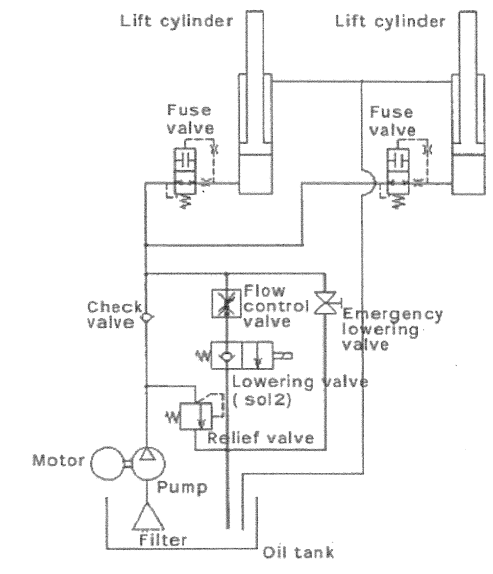


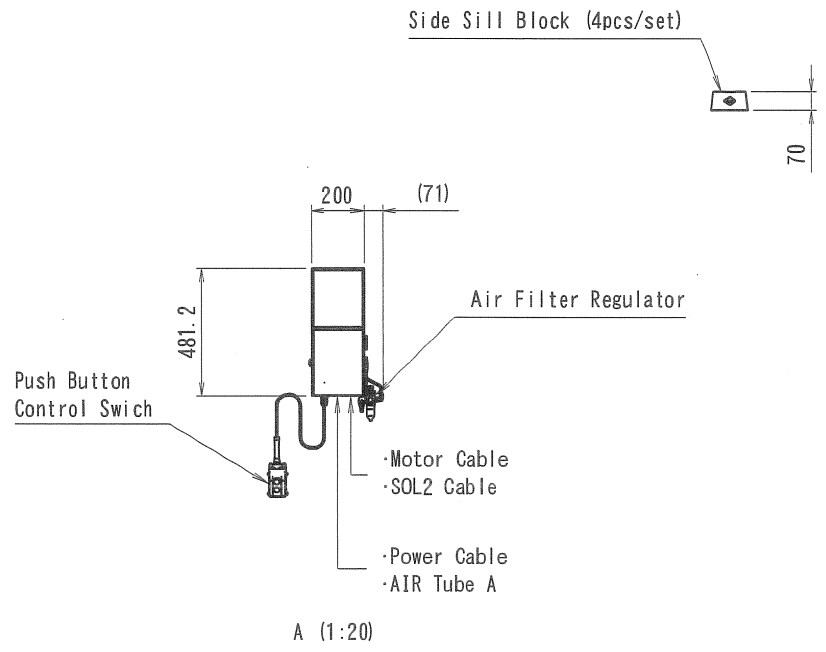
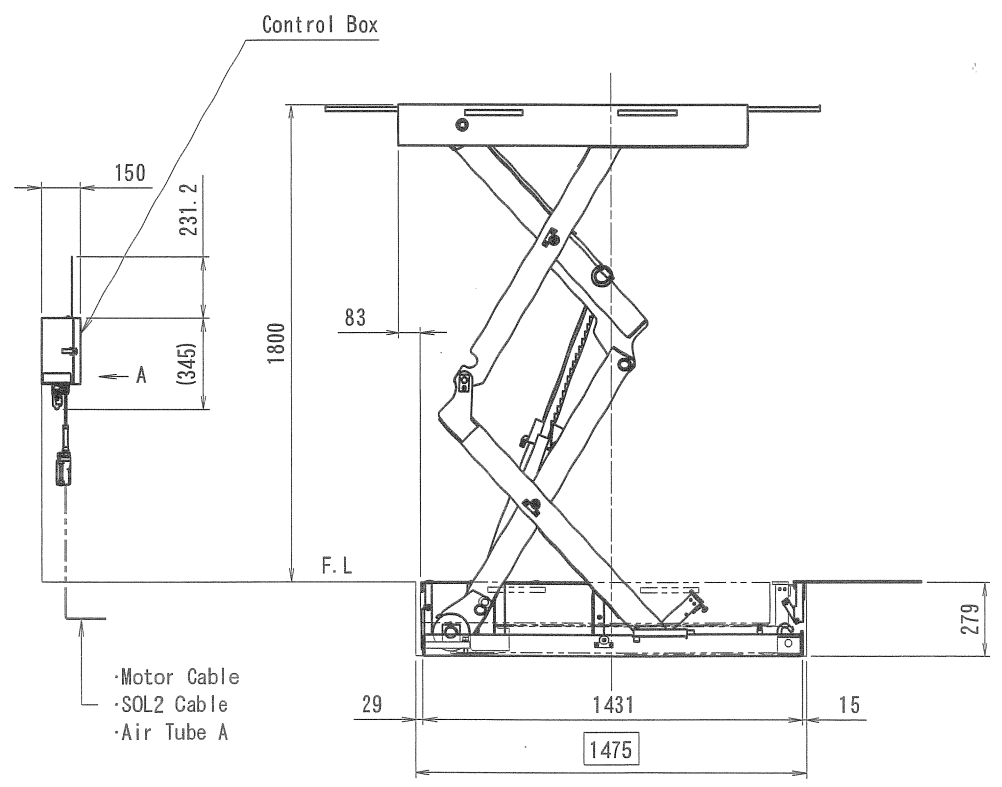
Drawing of the Lift at the bottom position

Spec.	
Model No.	BSC3200KU
Capacity	3200kgs
Vertical Travel	1800mm
Rising Speed (3200kg loaded)	Approx. 43 Sec. (60HZ) Approx. 52 Sec. (50HZ)
Lowering Speed (3200kg loaded)	Approx. 40 Sec.
Machine Weight	1010kgs
Power	3 Phase
Motor	2.2kw 4P 5minutes Rating
Control System	Electric Hydraulic
Control	Push Button Type
Oil	ISO VG32
Oil Volume	13L
Air Pressure	0.7MPa

Hydraulic circuit



Remarks.
Dimension of □ is pit dimension.

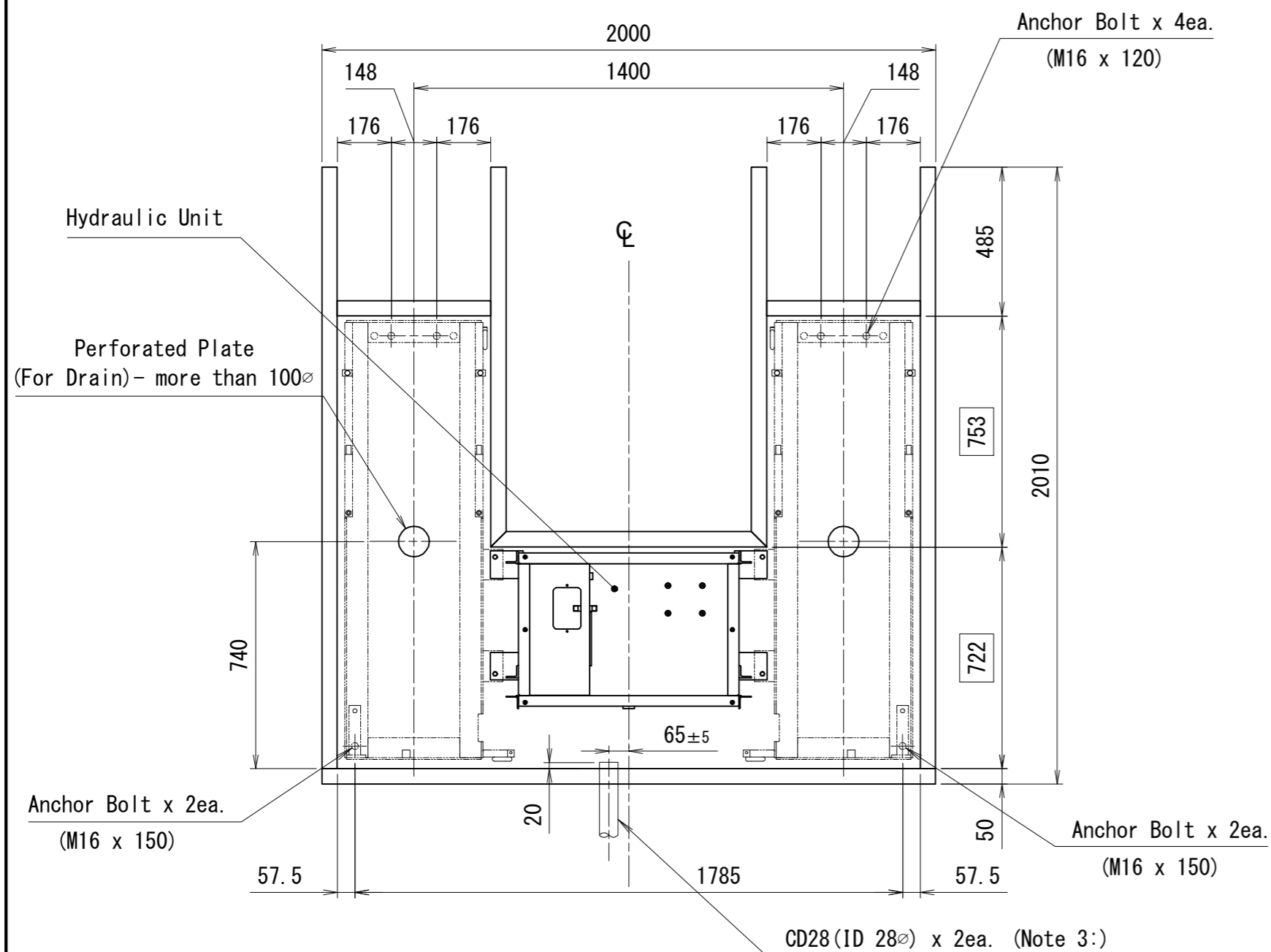


A (1:20)

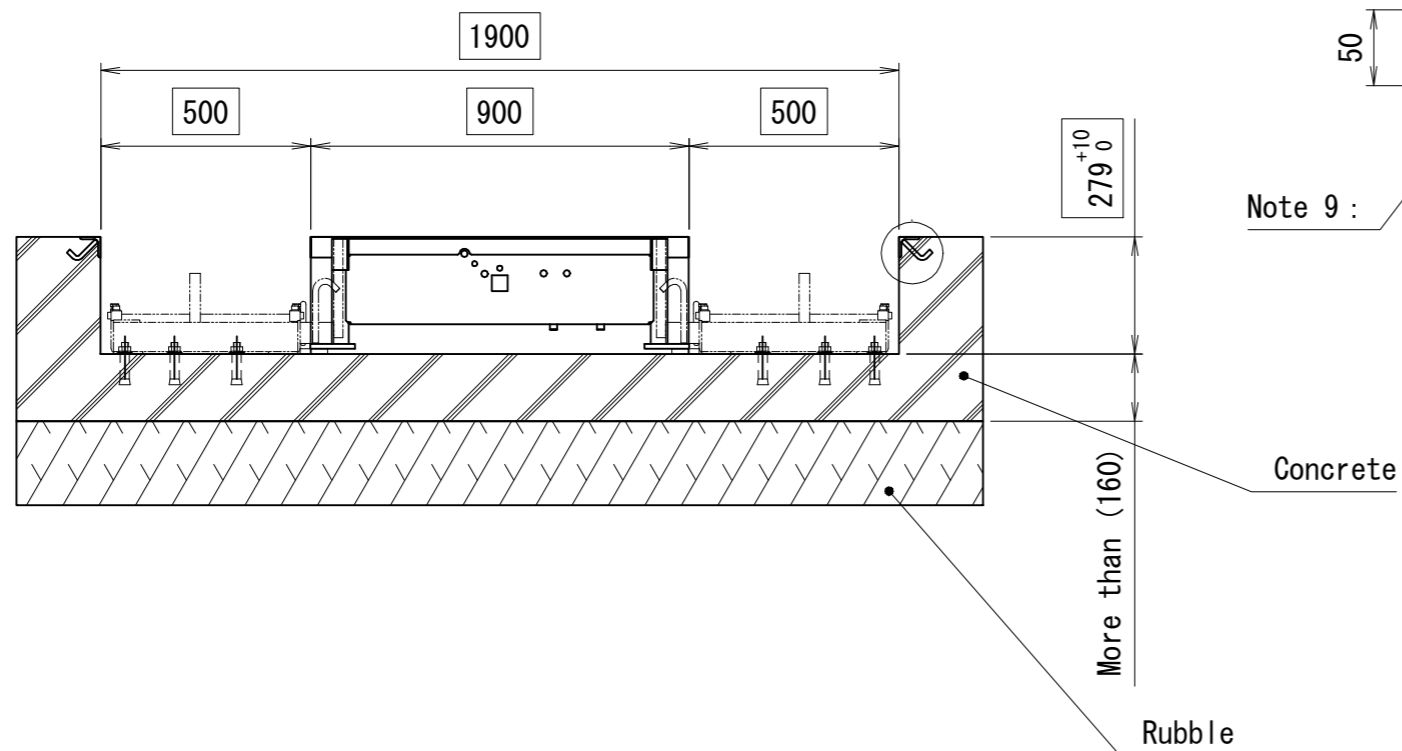
承認	SUGIYASU CORPORATION	
	品名 BSC3200KU Spec. Drawing	
検図	図番 BSC3200KU -021000-01	
	1 2 3 4 5 6 7 8 9	日付 2013/05/14
検図	製図 石川 恵	日付 1:20

訂正	年月日	記	事	担当承認

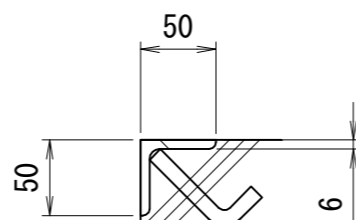
Drive-In Direction



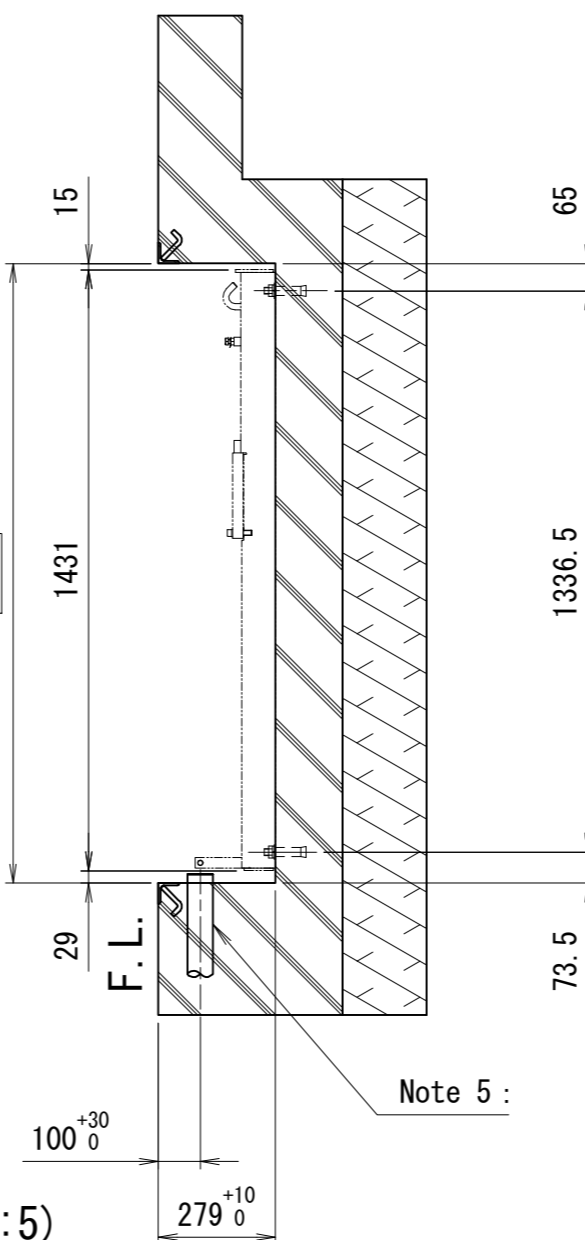
- Motor Cable
- Air Tube A (Black)
- SOL2 Cable



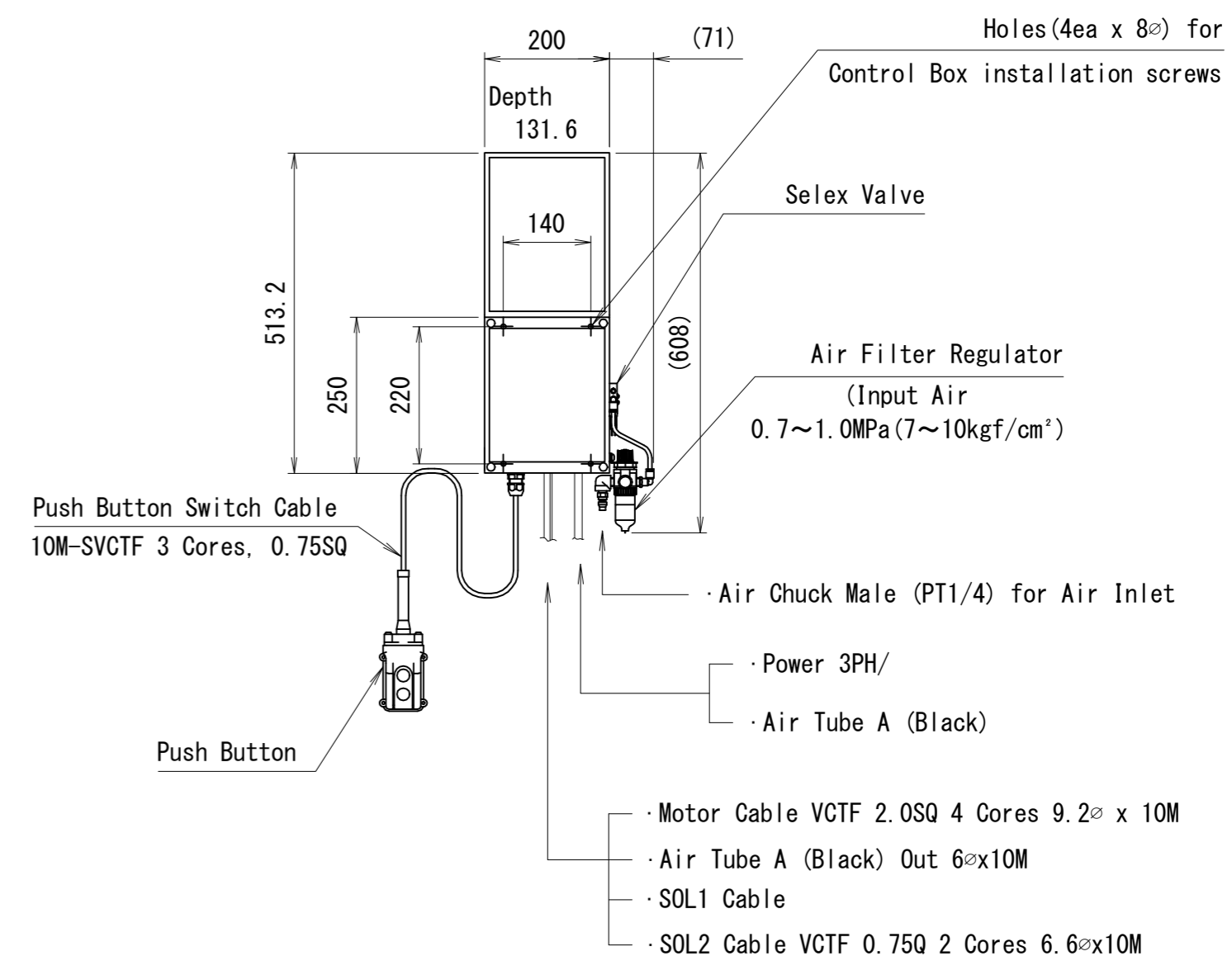
Note 9 :



A(1:5)



Control Box (installed remote)



Things to be prepared locally at installation site
 Angle Irons for corner angle - bigger than t6x50x50-longer than 11 Meters
 Conduit Tubing (CD28) for wiring and air tubings
 Power Cable (bigger than 4 Cores 2SQ)
 Air Piping for primary air (bigger than 3/8) 0.7~1.0MPa(7~10kgf/cm²)

- Note 1 : Concrete floor must be strong enough to bear 5.5 ton weight under the lift frame base
- Note 2 : Make sure to build the pit so that water can be completely discharged from the pit
- Note 3 : Conduit tube will not be supplied with lift (to be prepared locally)
- Note 4 : The spec in □ shows pit outside spec.
- Note 5 : Lift unit and Control Box must be installed within 9 meters distance
- Note 6 : Air hose between Lift unit and Control Box is OD6φ x ID4φ
- Note 7 : Install the lift following the Installation Manual
- Note 8 : The spec inside () is for reference only
- Note 9 : Concrete should be inside from surface of L Angle

株式会社スギヤス									
品名 BSC3200KU Pit Drawing									
検図番 BSC3200KU -022000-03									
1 2 3 4 5 6 7 8 9								日付 2018/08/02	
製石								尺度 FREE	

承認									
検図									
検図									
訂正	年月日	記	事	担当承認					